

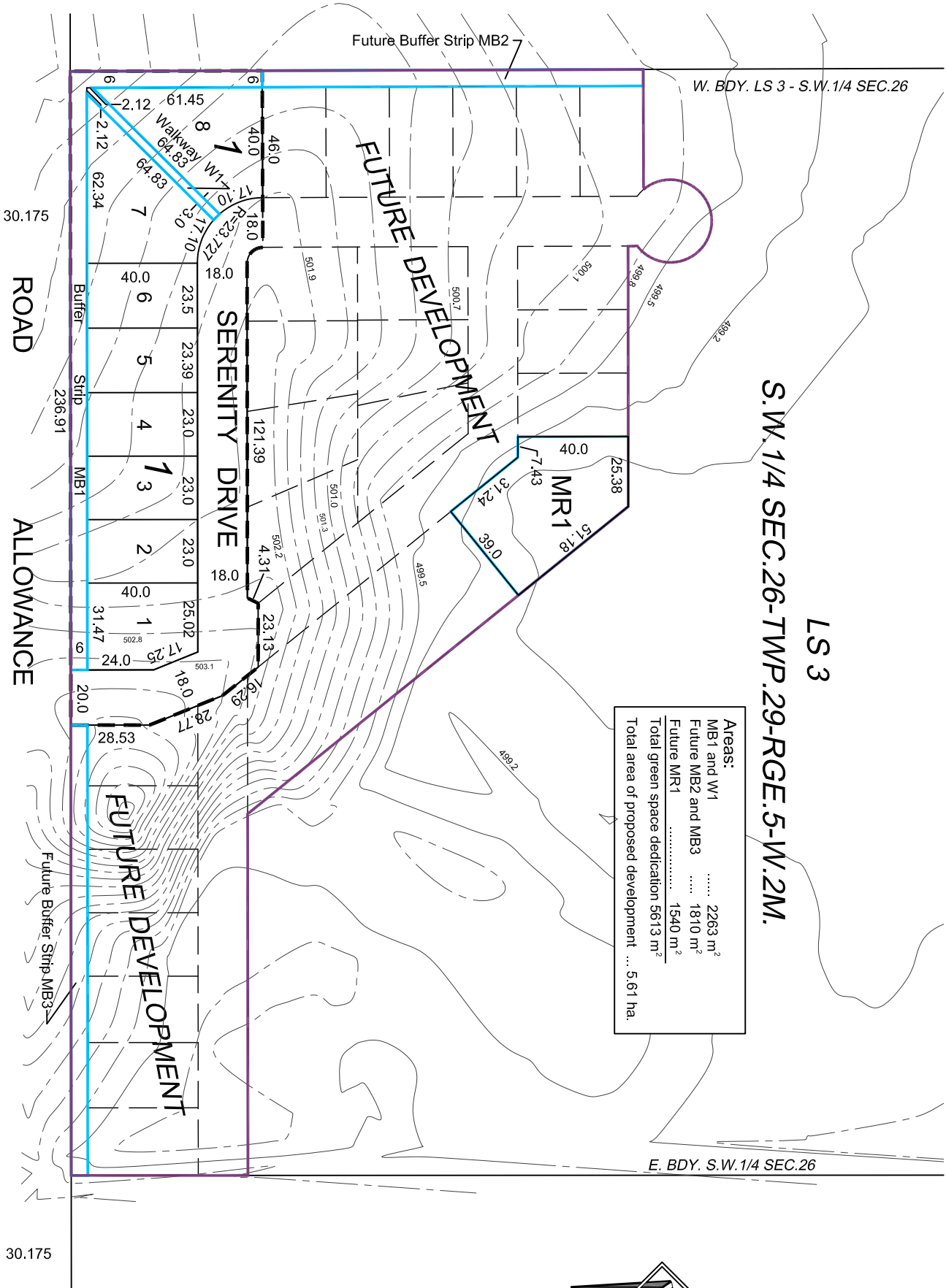
W. BDY. LS 3 - S.W. 1/4 SEC.26

S.W. 1/4 SEC.26-TWP.29-RGE.5-W.2M.

LS 3

E. BDY. S.W.1/4 SEC.26

Areas:	
MB1 and W1	..... 2263 m <sup>2</sup>
Future MB2 and MB3	..... 1810 m <sup>2</sup>
Future MR1	..... 1540 m <sup>2</sup>
Total green space dedication 5613 m <sup>2</sup>	
Total area of proposed development ... 5.61 ha.	



PLAN OF PROPOSED SUBDIVISION  
 SHOWING SUBDIVISION OF  
 PART OF LS 3  
 S.W. 1/4 SEC.26-29-5-W.2M<sub>er</sub>.  
 R.M. OF GOOD LAKE NO. 274  
 SASKATCHEWAN  
 2010  
 SCALE 1 : 2000

NOTE:  
 Measurements are in metres and decimals thereof.  
 Portions to be Approved is outlined in a bold dashed  
 line and contains 1.54 ha. (3.80 acs.)

*W.W. Obeid*  
 Saskatchewan Land Surveyor  
 Date July 5, 2010

File: 10R101

Toll Free 1-888-811-7375  
 Ph. (306) 359-7375  
 Fax: (306) 359-3853

