

23  
29-5-2

23  
29-5-2

# PLAN OF SURVEY

## SHOWING

### SURFACE SUBDIVISION

OF PART OF THE  
S.E.1/4 SEC. 23 - TWP. 29 - RGE. 5 - W.2Mer.  
R.M. OF GOOD LAKE NO. 274

SASKATCHEWAN

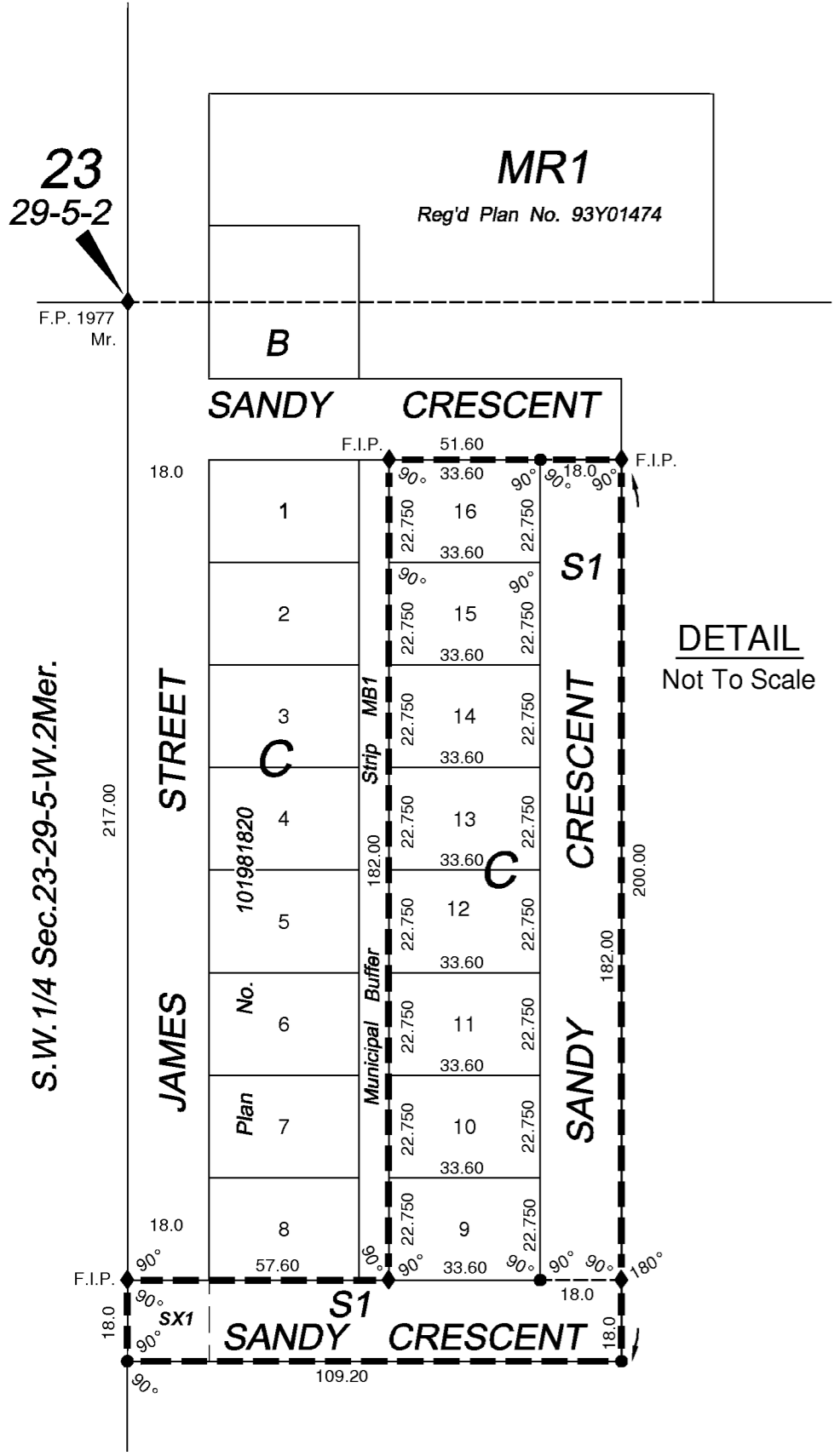
BY: P. SHRIVASTAVA, S.L.S.

MAY 2011

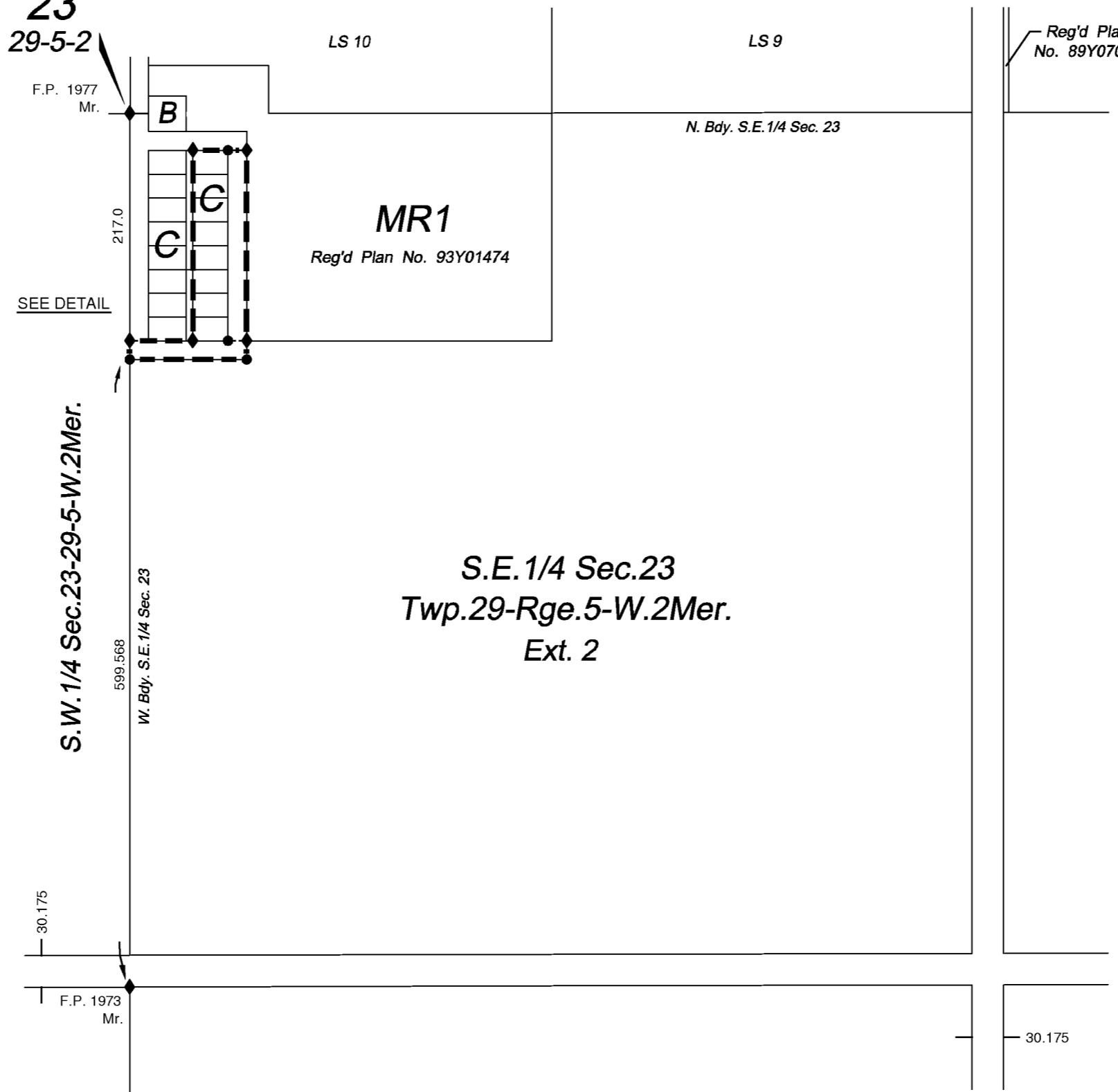
SCALE 1 : 5000

#### NOTE

- Measurements are in metres and decimals thereof.
- Area to be approved is outlined with a heavy dashed line.
- Monuments found are shown thus ..... ◆
- Standard iron posts planted are marked S042 and are shown thus ..... ●
- Lot corners are marked by 0.016 x 0.45 iron posts unless otherwise shown.
- Width of standard road allowance is 30.175 meters.
- All parcels within the line of approval have extension 0.



DETAIL  
Not To Scale



Reg'd Plan  
No. 89Y07096

